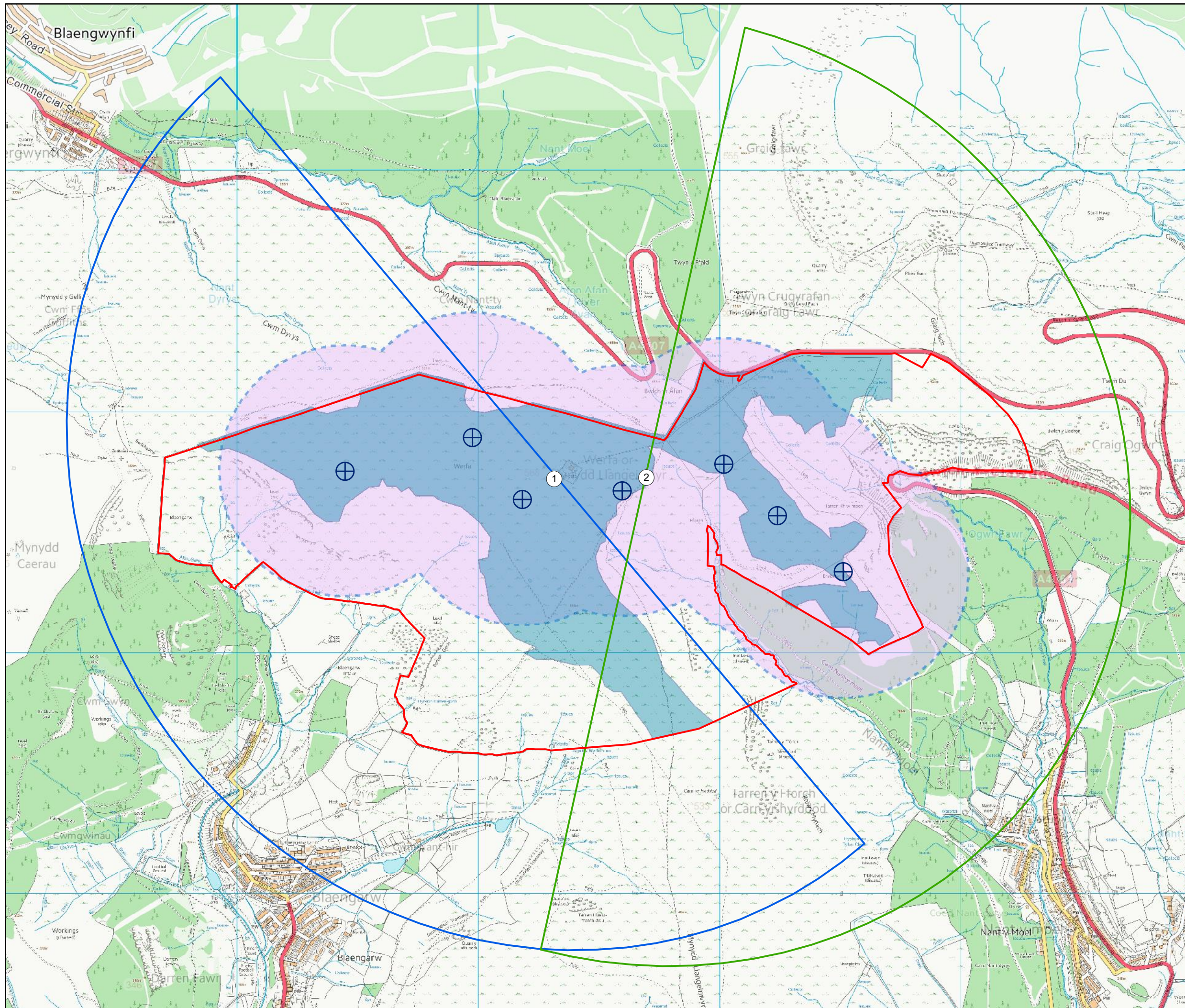




# UPPER OGMORE WINDFARM

## Figure 6.1: VP Locations and Survey Area

- Site boundary
- Developable area (<15% slope)
- Wind turbine location
- 500m turbine location buffer
- Vantage point (VP) locations
- 2 km 180° arc of view
  - Vantage point 1
  - Vantage point 2



Reproduced from Ordnance Survey digital data  
© Crown Copyright 2018. All rights reserved.  
License number 0100031673.

LAYOUT DWG: 02959D1001-01 | LAYOUT NO.: N/A

DRAWING NUMBER: N/A

SCALE - 1:15,000 @ A3

ENVIRONMENTAL STATEMENT  
2018

THIS DRAWING IS THE PROPERTY OF RENEWABLE ENERGY SYSTEMS LTD. AND NO REPRODUCTION MAY BE MADE IN WHOLE OR IN PART WITHOUT PERMISSION